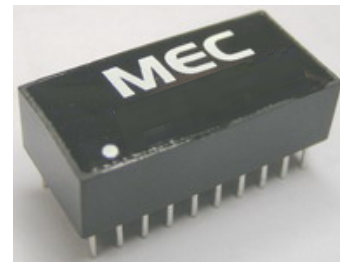


FEATURES

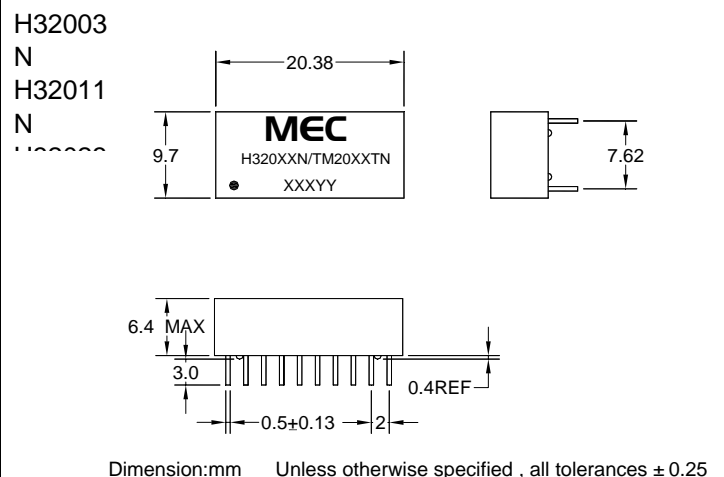
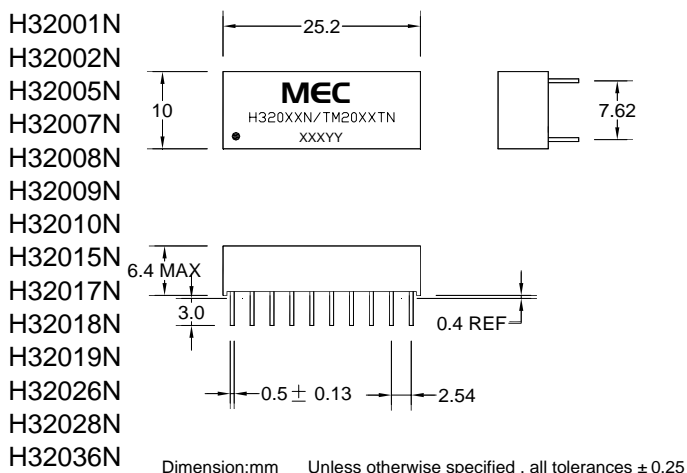
- Designed to meet IEEE 802.3u requirement
- For multiport repeater and Ethernet switching Hub application
- Primary inductance 350uH min. with 8mA DC Bias
- Isolation Voltage : 1500 Vrms



Part Number	Turns Ratio Pri:Sec(± 3%)		Insertion Loss (dB MAX)	Return Loss (dB TYP)			Crosstalk (dB TYP)			Differential to Common Mode Rejection (dB TYP)			Common to common Rejection Ratio (dB TYP)
	TX	RX		0.1~100 MHz	30 MHz	60 MHz	80 MHz	30 MHz	60 MHz	100 MHz	30 MHz	60 MHz	
H32001N	1:1	1:1	-1.10	-16	-12	-10	-40	-35	-30	-38	-35	-30	-30
H32002N	1:1	1:1	-1.10	-14	-10	-10	-40	-35	-30	-38	-35	-30	-30
H32003N	1:1	1:1	-1.00	-17	-14	-11	-40	-35	-32	-38	-33	-30	-35
H32004N	1:1	1:1	-1.15	-16	-13	-10	-42	-40	-35	-40	-38	-33	-30
H32005N	1:1	1:1	-1.00	-16	-13	-10	-42	-40	-38	-40	-35	-30	-40/-35
H32007N	1:1	1:1	-1.15	-16	-13	-10	-45	-40	-38	-38	-33	-30	-40
H32008N	1:1	1:1	-1.00	-16	-13	-10	-42	-40	-35	-40	-38	-35	-40/-35
H32009N	1:1	1:1	-1.15	-16	-13	-10	-40	-38	-33	-38	-33	-30	-30
H32010N	1:1	1:1	-1.15	-16	-13	-10	-40	-38	-33	-40	-38	-35	-30
H32011N	1:1	1:1	-1.15	-16	-13	-10	-42	-40	-38	-40	-38	-35	-35
H32015N	1:1	1:1	-1.00	-18	-15	-12	-40	-38	-35	-38	-35	-33	-40
H32017N	1:1	1:1	-1.15	-16	-13	-10	-38	-30	-28	-40	-35	-30	-40
H32018N	1:1	1:1	-1.10	-18	-15	-12	-42	-40	-38	-40	-38	-33	-40
H32019N	1:1	1:1	-1.15	-16	-13	-10	-42	-40	-38	-42	-40	-35	-30
H32023N	1:1	1:1	-1.15	-16	-13	-10	-42	-40	-35	-40	-38	-35	-30
H32026N	1:1	1:1	-1.15	-16	-13	-10	-38	-35	-30	-42	-40	-30	-35
H32028N	1:1	1:1	-1.00	-18	-15	-12	-45	-40	-33	-35	-27	-25	-30
H32036N	1:1	1:1	-1.15	-16	-13	-10	-42	-40	-38	-42	-40	-35	-30

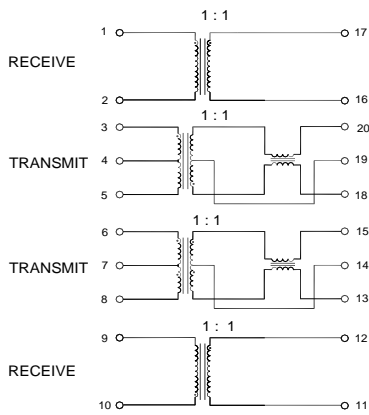
- Electrical Specifications @25°C -Operating Temperature 0°C to 70°C.

Mechanicals

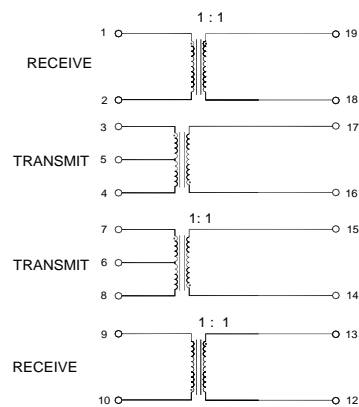


Schematics

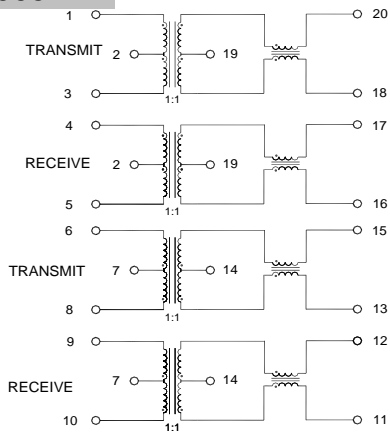
H32001N



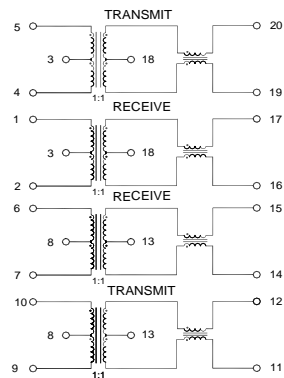
H32002N



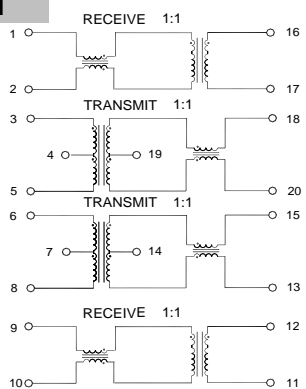
H32003N



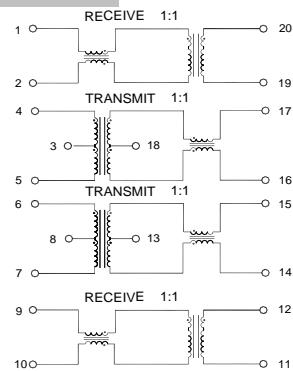
H32004N



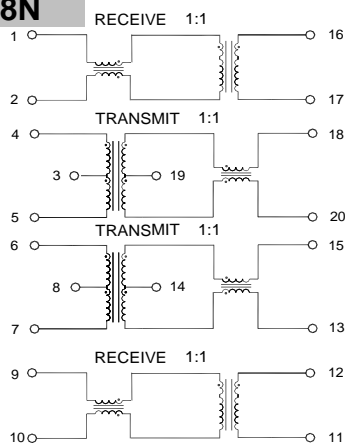
H32005N



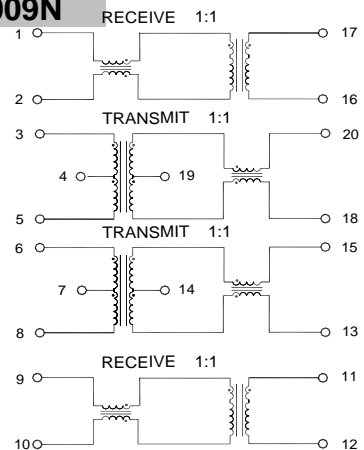
H32007N



H32008N

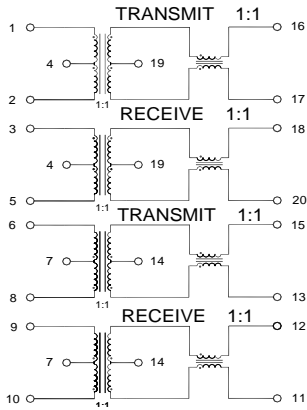


H32009N

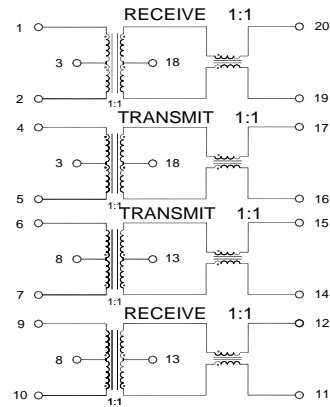


Schematics

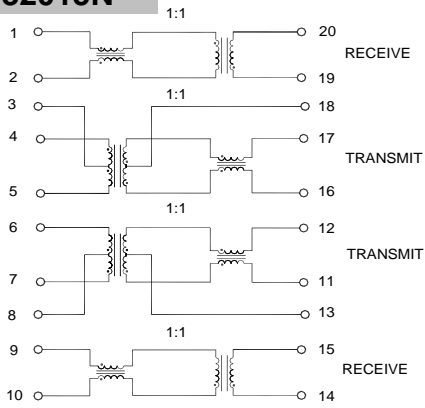
H32010N



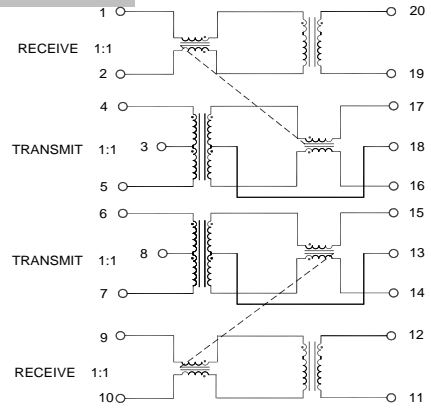
H32011N



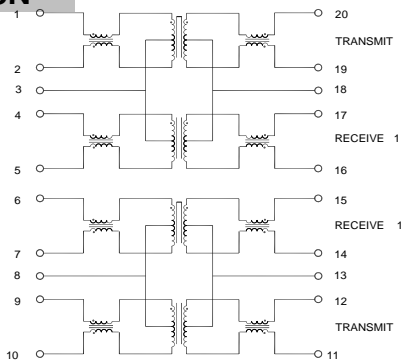
H32015N



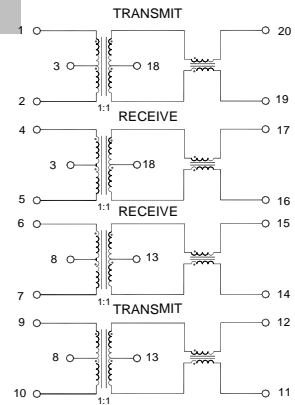
H32017N



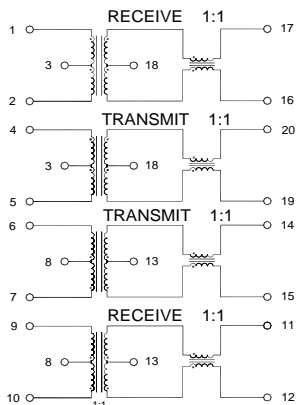
H32018N



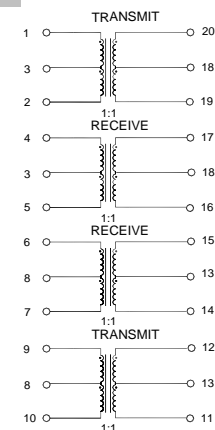
H32019N



H32023N

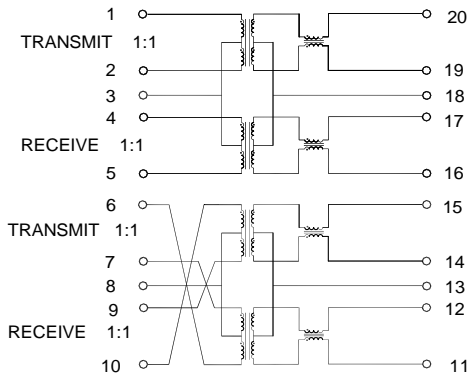


H32026N



Schematics

H32028N



H32036N

