

FEATURES

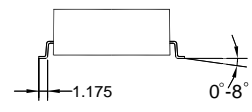
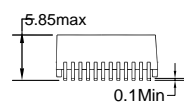
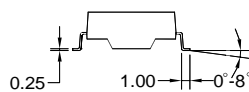
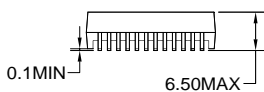
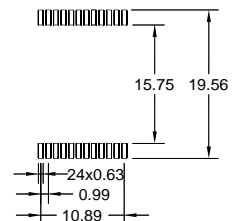
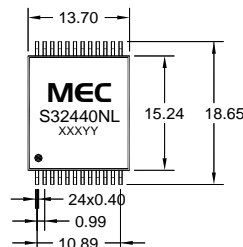
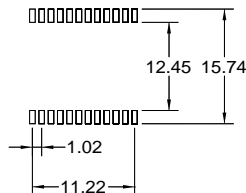
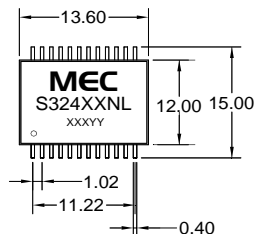
- Meets IEEE 802.3 and ANSI X3.263 standards, Including 350 uH OCL with 8 mA Bias
- Designed for reflow soldering at temperatures Up to 255-265°C
- Improved common mode (EMI) performance
- Isolation voltage:1500 Vrms



Part Number	Turns Ratio Pri:Sec(± 3%)		Insertion Loss (dB MAX)	Return Loss (dB TYP)			Crosstalk (dB TYP)			Differential to Common Mode Rejection (dB TYP)			Common to common Rejection Ratio (dB TYP)
	TX	RX		0.1~100 MHz	30 MHz	60 MHz	80 MHz	30 MHz	60 MHz	100 MHz	30 MHz	50 MHz	
S32414NL	1:1	1:1	-1.2	-16	-14	-12	-40	-35	-30	-40	-37	-30	-30
S32419NL	1:1	1:1	-1.2	-16	-14	-12	-43	-37	-30	-43	-37	-33	-30
S32440NL	1:1	1:1	-1.0	-16	-14	-12	-43	-37	-33	-43	-37	-33	-30
S32441NL	1:1	1:1	-1.1	-16	-13	-12	-43	-37	-33	-43	-37	-33	-30

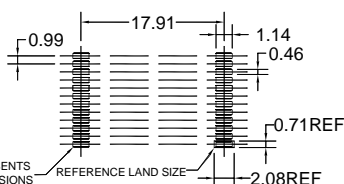
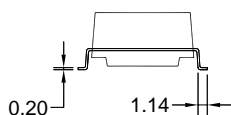
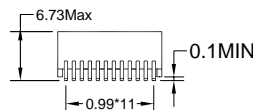
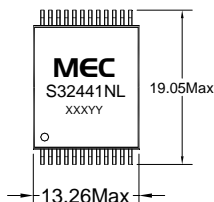
- Electrical Specifications @25°C-Operating Temperature 0°C to 70°C.

Mechanicals



Dimensions:mm Unless otherwise specified , all tolerances are ± 0.25

Dimensions:mm Unless otherwise specified,all to lerances sre± 0.2



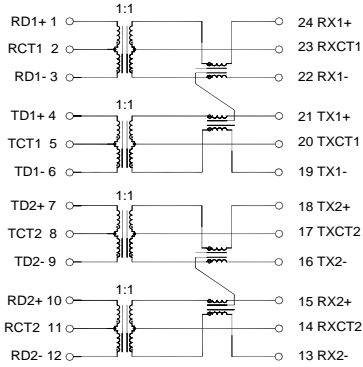
-AREA REPRESENTS TERMINAL PAD DIMENSIONS

REFERENCE LAND SIZE

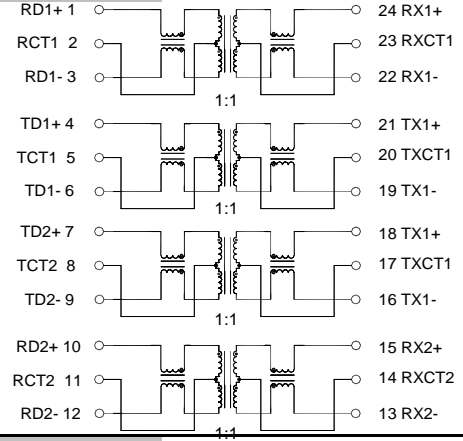
Dimensions:mm Unless otherwise specified , all tolerances are ± 0.25

Schematics

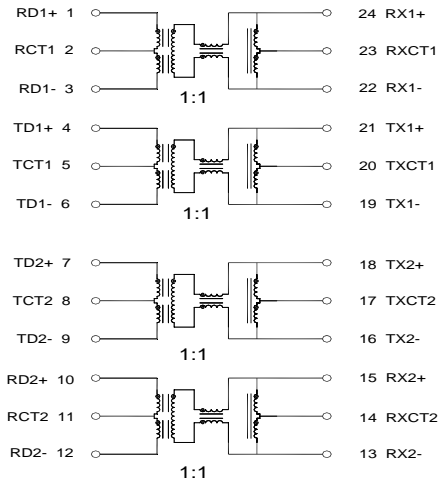
S32414NL



S32419NL



S32440NL



S32441NL

