

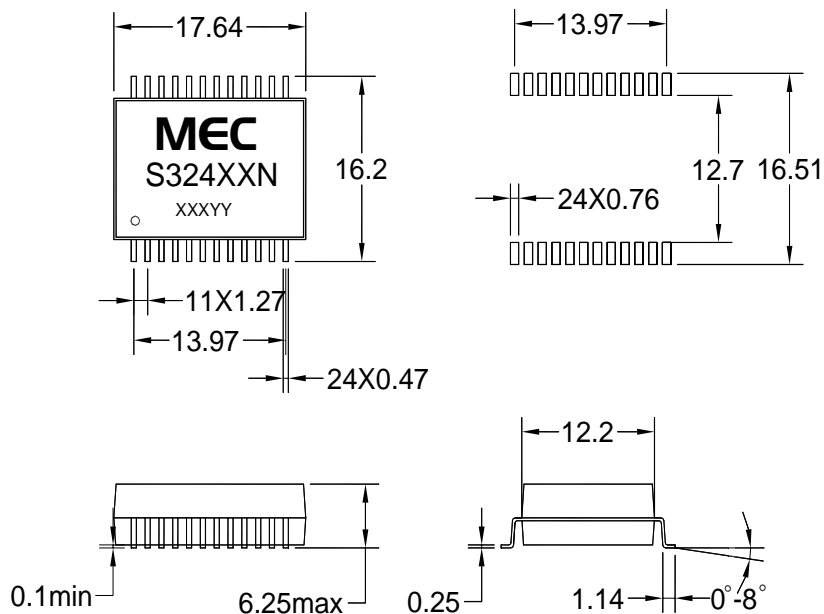
FEATURES

- Meets IEEE802.3 and ANSI X3.263 standards,
- Including 350 μ H Min OCL with 8mA DC bias
- Withstands reflow soldering temperature up to 255-265°C
- Isolation Voltage : 1500 Vrms

Part Number	Turns Ratio Pri:Sec(\pm 3%)		Insertion Loss (dB MAX)	Return Loss (dB TYP)			Crosstalk (dB TYP)			Differential to Common Mode Rejection (dB TYP)			Common to common Rejection Ratio (dB TYP)
	TX	RX		0.1~100 MHz	30 MHz	60 MHz	80 MHz	30 MHz	60 MHz	100 MHz	30 MHz	50 MHz	
S32402N	1:1	1:1	-1.1	-16	-13	-10	-50	-40	-32	-40	-35	-30	-21
S32403N	1:1	1:1	-1	-16	-12	-11	-40	-38	-35	-42	-37	-33	-30
S32404N	1:1	1:1	-1	-18	-15	-12	-40	-38	-35	-42	-37	-33	-33
S32405N	1:1	1:1	-1	-18	-12	-11	-40	-38	-35	-42	-37	-33	-30
S32406N	1:1	1:1	-1	-16	-12	-12	-40	-40	-35	-42	-37	-33	-30
S32412N	1:1	1:1	-1	-18		-12	-42	-35	-33	-38	-35	-30	-30
S32439N	1:1	1:1	-1.0	-18	-14	-12	-42	-35	-33	-45	-35	-30	-30

- Electrical Specifications @25°C-Operating Temperature 0°C to 70°C.

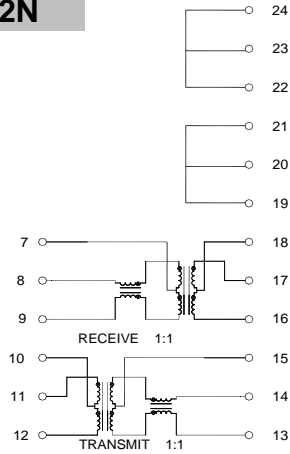
Mechanicals



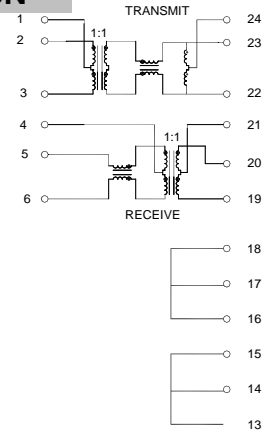
Dimensions:mm Unless otherwise specified , all tolerances are \pm 0.25

Schematics

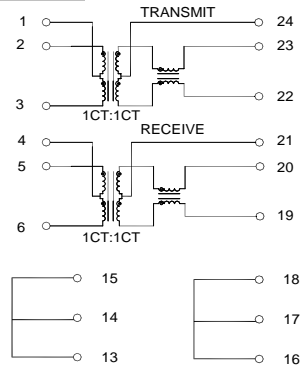
S32402N



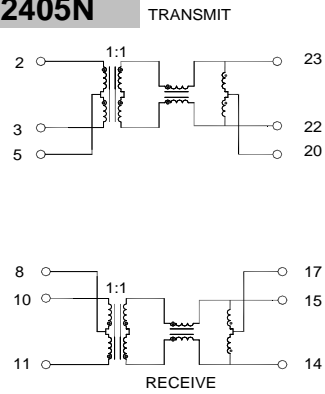
S32403N



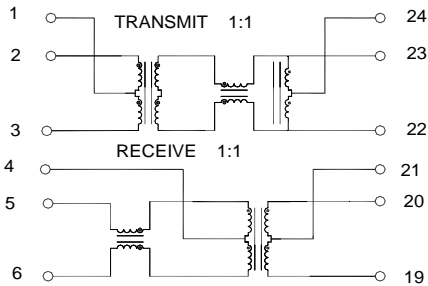
S32404N



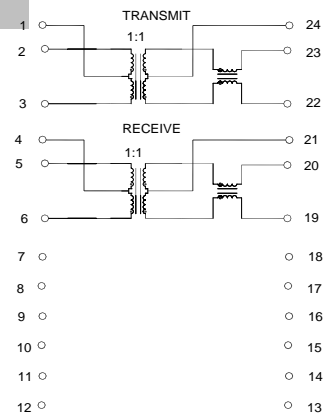
S32405N



S32406N



S32412N



S32439N

