

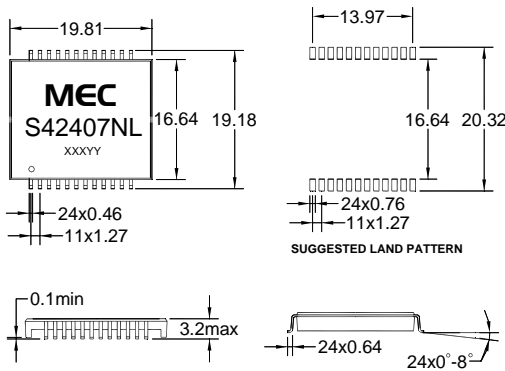
### FEATURES

- Compliant with IEEE 802.3ab standards for 1000Base-T
- Including 350  $\mu$  H Min OCL with 8mA DC bias
- Withstands reflow soldering temperature up to 255-265°C
- Isolation Voltage : 1500 Vrms

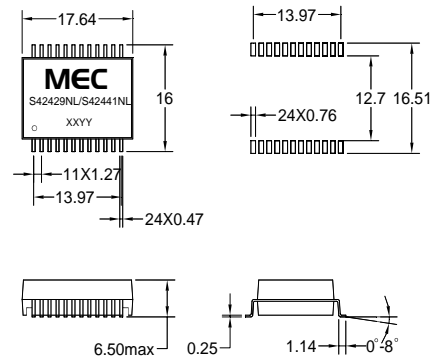
Part Number	Turns Ratio Pri:Sec( $\pm$ 3%)		Insertion Loss (dB MAX)	Return Loss (dB TYP)			Crosstalk (dB TYP)			Differential to Common Mode Rejection (dB TYP)			Common to common Rejection Ratio (dB TYP)
	TX	RX		30 MHz	60 MHz	80 MHz	30 MHz	60 MHz	100 MHz	30 MHz	50 MHz	100 MHz	
S42407NL	1:1	1:1	-1.0	-18	-14	-13	-45	-40	-35	-45	-40	-40	-30
S42415NL	1:1	1:1	-1.0	-16	-12	-10	-45	-40	-35	-40	-33	-30	-30
S42417NL	1:1	1:1	-1.0	-18	-13.1	-12	-45	-40	-35	-43	-37	-33	-30
S42423NL	1:1	1:1	-1.0	-18	-14	-12	-45	-40	-35	-43	-37	-33	-30
S42424NL	1:1	1:1	-1.0	-18	-14	-12	-45	-40	-35	-43	-37	-33	-30
S42429NL	1:1	1:1	-1.1	-18	-14	-12	-40	-38	-35	-43	-37	-33	-30
S42433NL	1:1	1:1	-1.0	-18	-14	-12	-40	-38	-35	-43	-37	-33	-30
S42439NL	1:1	1:1	-1.1	-18	-14	-12	-45	-40	-38	-40	-38	-35	-40
S42440NL	1:1	1:1	-1.0	-23	-14	-16	-45	-40	-35	-43	-37	-33	-30
S42441NL	1:1	1:1	-1.1	-16	-14	-12	-40	-35	-30	-40	-35	-30	-35

● Electrical Specifications @25°C-Operating Temperature 0°C to 70°C.

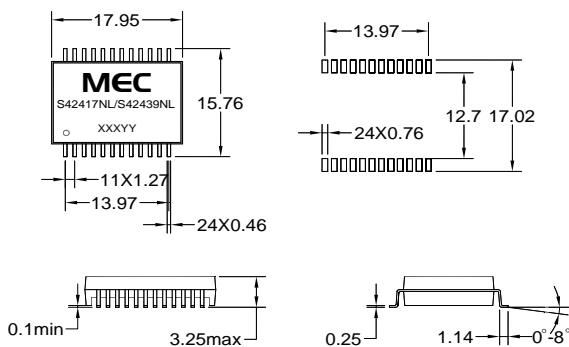
### Mechanicals



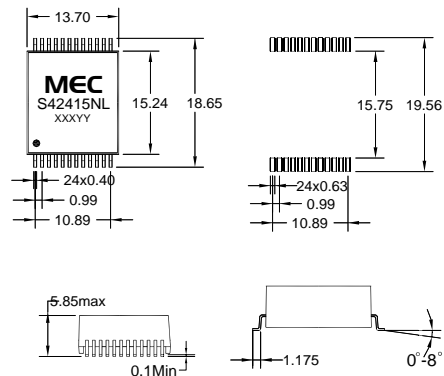
Dimensions:mm Unless otherwise specified , all tolerances are  $\pm$  0.25



Dimensions:mm Unless otherwise specified , all tolerances are  $\pm$  0.25



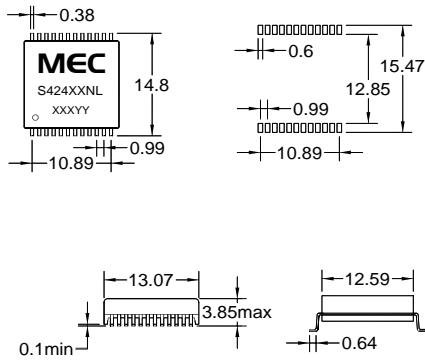
Dimensions:mm Unless otherwise specified , all tolerances are  $\pm$  0.25



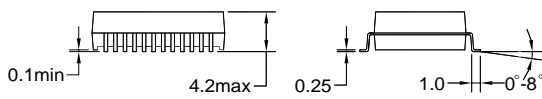
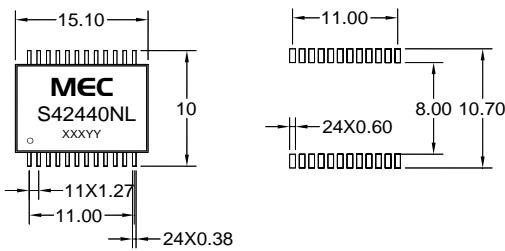
Dimensions:mm Unless otherwise specified,all to lerances sre $\pm$  0.25

### Mechanicals

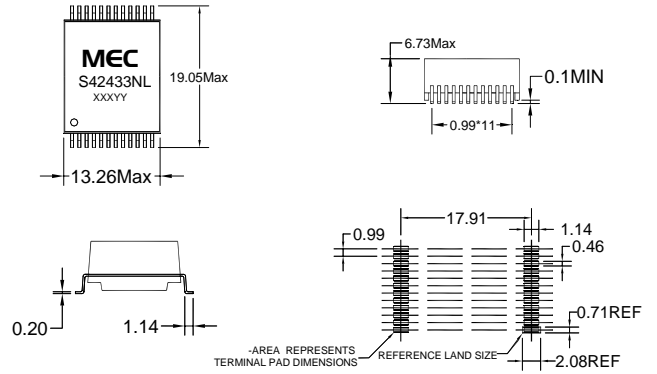
#### S42423NL / S42424NL



Dimensions:mm Unless otherwise specified , all tolerances are  $\pm 0.25$



Dimensions:mm Unless otherwise specified , all tolerances are  $\pm 0.25$



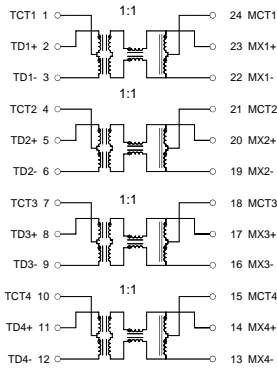
# MEC

MINGSTAR ELECTRONIC CORP.

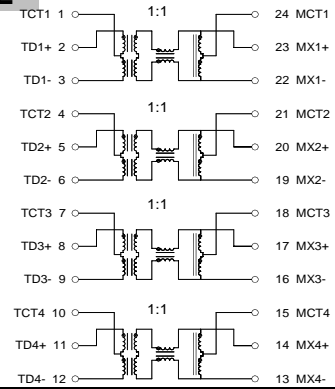
## GIGABIT BASE-T SINGLE PORT MAGNETICS MODULES

### Schematics

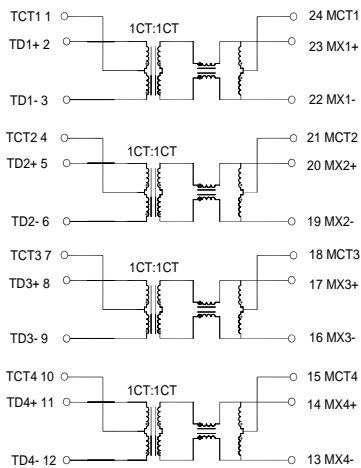
#### S42407NL



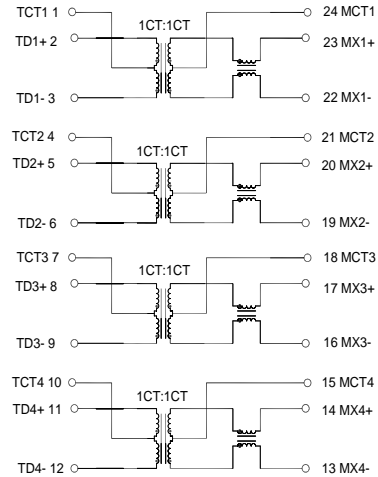
#### S42415NL



#### S42417NL

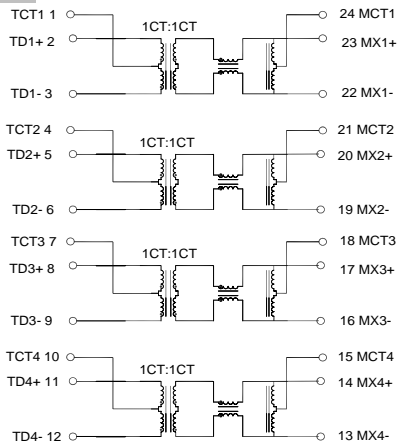


#### S42423NL

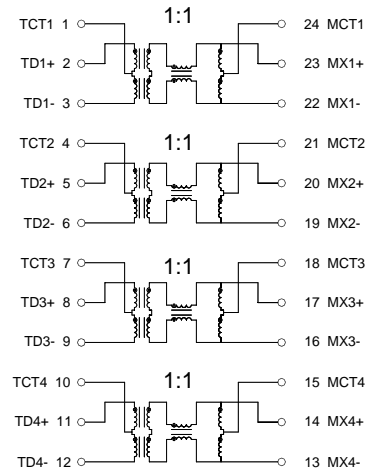


### Schematics

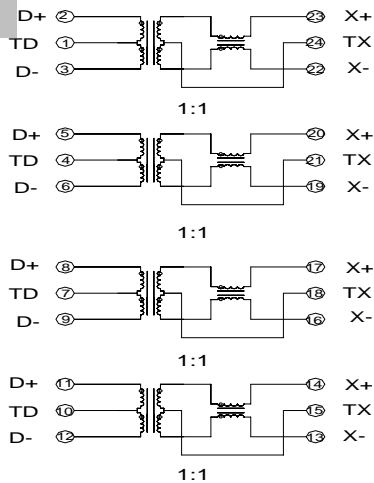
#### S42424NL



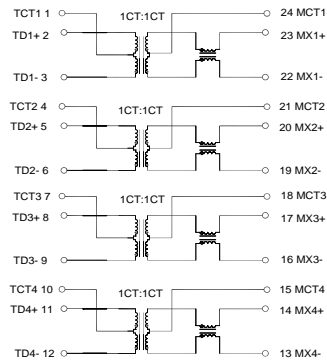
#### S42429NL



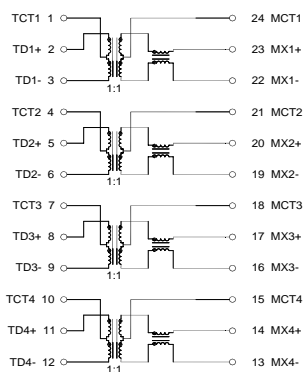
#### S42433NL



#### S42439NL



#### S42440NL



#### S42441NL

