

FEATURES

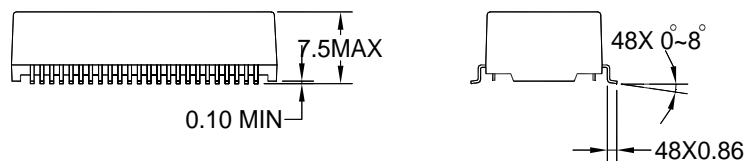
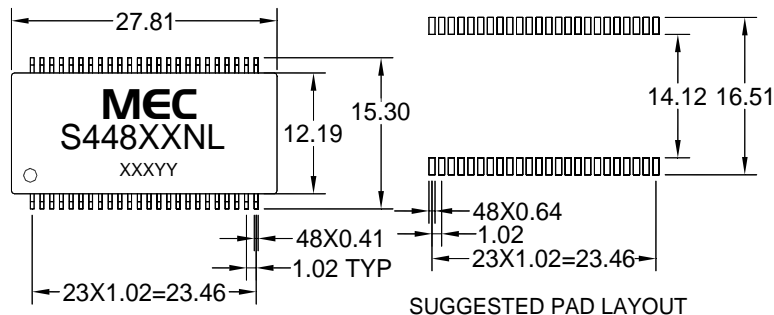
- Meets IEEE 802.3 and ANSI X3.263 standards, Including 350 uH OCL with 8 mA bias
- Designed for reflow soldering at temperatures Up to 255-265°C
- Designed for Ethernet 100/1000Base-TX full duplex applications
- Isolation Voltage : 1500 Vrms



Part Number	Turns Ratio Pri:Sec(± 3%)		Insertion Loss (dB MAX)	Return Loss (dB MIN)					Crosstalk (dB MIN)			Differential to Common Mode Rejection (dB TYP)		
	TX	RX		0.1~100 MHZ	2~30 MHZ	40 MHZ	50 MHZ	60~80 MHZ	100 MHZ	30 MHZ	60 MHZ	100 MHZ	30 MHZ	60 MHZ
S44802NL	1:1	1:1	-1.4	-16	-14.4	-13.1	-12	-10	-40	-35	-30	-45	-40	-35
S44803NL	1:1	1:1	-1.4	-16	-14.4	-13.1	-12	-10	-42	-37	-33	-45	-40	-35
S44807NL	1:1	1:1	-1.4	-16	-14.4	-13.1	-12	-10	-42	-37	-33	-45	-40	-35
S44808NL	1:1	1:1	-1.0	-18			-12	-10	-43	-37	-33			

- Electrical Specifications @25°C -Operating Temperature 0°C to 70°C.

Mechanicals

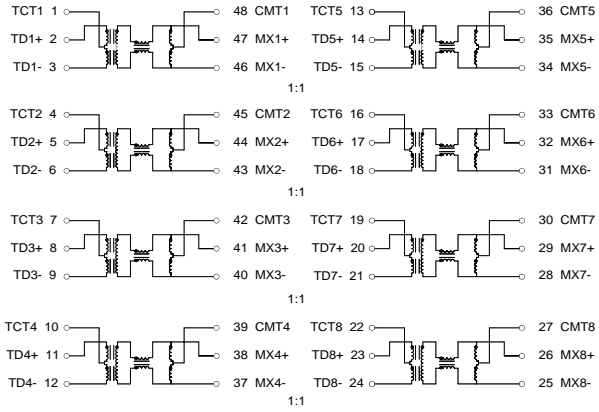


Dimension : mm

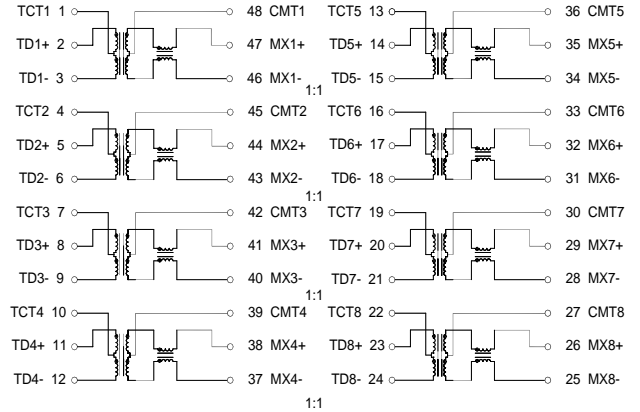
Unless otherwise specified , all tolerance are ± 0.25

Schematics

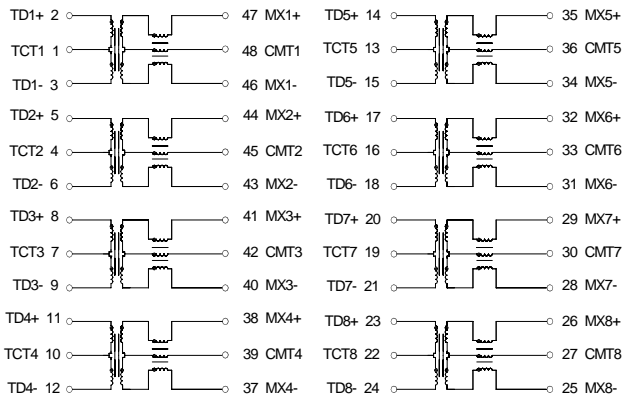
S44802NL



S44803NL



S44807NL



S44808NL

