

Dimensions:mm

A:4.0±0.5

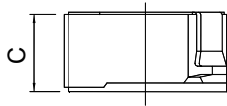
B:4.0±0.5

C:1.9(Max)

D:5.2 (Max)

E:Ø2.8 (REF)

F:1.10(REF)



## Electrical characteristics

Part No.	Inductance	TESTING	DC	RATED DC	
	L (uH)	FREQ (KHZ)	RESISTANCE (OHM)Max	CURRENT (A)Max Isat	Irms
CDH3D16N-1R0□	1.0	200	0.0400	1.600	/
CDH3D16N-1R5□	1.5	200	0.0520	1.550	/
CDH3D16N-2R2□	2.2	200	0.0720	1.200	/
CDH3D16N-2R5□	2.5	200	0.0750	1.200	/
CDH3D16N-2R7□	2.7	200	0.0780	1.200	/
CDH3D16N-3R3□	3.3	200	0.0850	1.100	2.00
CDH3D16N-4R7□	4.7	200	0.1050	0.900	1.72
CDH3D16N-6R8□	6.8	200	0.1700	0.730	1.30
CDH3D16N-8R2□	8.2	200	0.1950	0.650	1.28
CDH3D16N-100□	10.0	200	0.2100	0.550	1.07
CDH3D16N-150□	15.0	200	0.2950	0.450	0.87
CDH3D16N-220□	22.0	200	0.4300	0.400	0.66
CDH3D16N-270□	27.0	200	0.6200	0.350	0.60
CDH3D16N-330□	33.0	200	0.6750	0.320	0.55
CDH3D16N-470□	47.0	200	1.1750	0.260	0.45
CDH3D16N-101□	100	200	2.0000	0.130	
CDH3D16N-151□	151	200	2.3000	0.110	
CDH3D16N-181□	181	200	3.0000	0.080	
CDH3D16N-221□	221	200	5.5000	0.080	

□:M=±20% P=±30%