

Dimensions:mm

A:6.0(Max)

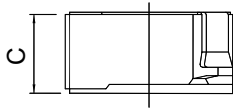
B:6.0(Max)

C:2.0(Max)

D:8.2 (Max)

E:Ø4.7 (REF)

F:2.0(REF)



## Electrical characteristics

Part No.	Inductance	TESTING	DC	RATED DC CURRENT
	L (uH)	FREQ (KHZ)	RESISTANCE (OHM)Max	
CDH5D18N-3R3□	33.3	100	50m	2.15
CDH5D18N-4R1□	4.1	100	57m	1.95
CDH5D18N-5R4□	5.4	100	76m	1.60
CDH5D18N-6R2□	6.2	100	96m	1.40
CDH5D18N-8R9□	8.9	100	116m	1.25
CDH5D18N-100□	10.0	100	0.124	1.20
CDH5D18N-120□	12.0	100	0.153	1.10
CDH5D18N-150□	15.0	100	0.196	0.97
CDH5D18N-180□	18.0	100	0.210	0.85
CDH5D18N-220□	22.0	100	0.290	0.80
CDH5D18N-270□	27.0	100	0.330	0.75
CDH5D18N-330□	33.0	100	0.386	0.65
CDH5D18N-390□	39.0	100	0.520	0.57
CDH5D18N-470□	47.0	100	0.595	0.54
CDH5D18N-560□	56.0	100	0.665	0.50
CDH5D18N-680□	68.0	100	0.840	0.43
CDH5D18N-820□	82.0	100	0.978	0.41
CDH5D18N-101□	100.0	101	1.200	0.36

□:M=±20% P=±30%