

Dimensions:mm

A:6.0(Max)

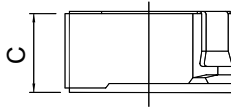
B:6.0(Max)

C:3.0 (Max)

D:8.2 (Max)

E:Ø4.7 (REF)

F:2.0(REF)



Electrical characteristics

| Part No. | Inductance L (uH) | TESTING FREQ (KHZ) | DC RESISTANCE (OHM)Max | RATED DC CURRENT (A)Max |
|---------------|-------------------------|--------------------------|------------------------------|-------------------------------|
| CDH5D28N-2R6□ | 2.6 | 100 | 18m | 2.60 |
| CDH5D28N-3R0□ | 3.0 | 100 | 24m | 2.40 |
| CDH5D28N-4R2□ | 4.2 | 100 | 31m | 2.20 |
| CDH5D28N-5R3□ | 5.3 | 100 | 38m | 1.90 |
| CDH5D28N-6R2□ | 6.2 | 100 | 45m | 1.80 |
| CDH5D28N-8R2□ | 8.2 | 100 | 53m | 1.60 |
| CDH5D28N-100□ | 10.0 | 100 | 65m | 1.30 |
| CDH5D28N-120□ | 12.0 | 100 | 76m | 1.20 |
| CDH5D28N-150□ | 15.0 | 100 | 0.103 | 1.10 |
| CDH5D28N-180□ | 18 | 100 | 0.110 | 1.00 |
| CDH5D28N-220□ | 22 | 100 | 0.122 | 0.90 |
| CDH5D28N-270□ | 27 | 100 | 0.175 | 0.85 |
| CDH5D28N-330□ | 33 | 100 | 0.189 | 0.75 |
| CDH5D28N-390□ | 39 | 100 | 0.212 | 0.70 |
| CDH5D28N-470□ | 47 | 100 | 0.260 | 0.62 |
| CDH5D28N-560□ | 56 | 100 | 0.305 | 0.58 |
| CDH5D28N-680□ | 68 | 100 | 0.355 | 0.52 |
| CDH5D28N-820□ | 82 | 100 | 0.463 | 0.46 |
| CDH5D28N-101□ | 100 | 100 | 0.520 | 0.42 |
| CDH5D28N-121□ | 120 | 100 | 0.850 | 0.31 |
| CDH5D28N-151□ | 150 | 100 | 0.956 | 0.26 |

□:M=±20% P=±30%