

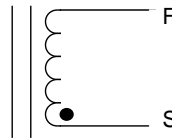
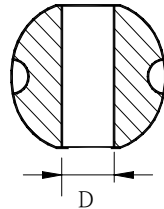
Dimensions:mm

A:6.5± 0.5

B:6.0± 0.5

C:3.2± 0.5

D:1.45 (REF)



Electrical characteristics

Part No.	Inductance	TESTING	DC	RATED DC
	L (uH)	FREQ (KHZ)	RESISTANCE (OHM)Max	CURRENT (A)Max
CDR063N-100□	10.0	200	0.14	1.00
CDR063N-120□	12.0	200	0.16	0.94
CDR063N-150□	15.0	200	0.18	0.86
CDR063N-180□	18.0	200	0.25	0.78
CDR063N-220□	22.0	200	0.32	0.76
CDR063N-270□	27.0	200	0.36	0.64
CDR063N-330□	33.0	200	0.41	0.61
CDR063N-390□	39.0	200	0.47	0.53
CDR063N-470□	47.0	200	0.51	0.50
CDR063N-560□	56.0	200	0.72	0.46
CDR063N-680□	68.0	200	0.82	0.42

□:M=±20% P=±30%